



## Why to become a Channel Partner of iXR Labs?

### About iXR Labs

At iXR labs we are pioneering the use of cutting-edge technology in Higher education. We are deploying AR/VR/MR, 3D, and Gamification to improve the efficiency and efficacy of higher education.

We cover fields such as Engineering, Medical, Science Grad, Architecture and Business Studies, while also aiding in Industrial and Corporate Learning and Development.

iXR labs bring to you exciting, immersive, insightful, and interactive journeys, and accurate models that are completely manipulatable in a 3D environment hence driving curiosity and self-learning. iXR labs combine journeys detailed explanations and in-built assessments which ensure better and faster learning. iXR labs run across platforms such as VR headsets, PCs, Mobile, and the web.

iXR labs showreel engineering: <https://www.youtube.com/watch?v=cGK4mj0XGqA>

### Why to become a Channel Partner of iXR Labs for Engineering Colleges & Universities?:

- **iXR (Interactive Extended Reality) Labs** are companies that specialize in creating immersive experiences using technologies such as virtual reality (VR), augmented reality (AR), and mixed reality (MR). Channel partners are independent companies or individuals who work with iXR Labs to distribute their products or services to end customers. There are several key attractions for a channel partner to work with an iXR Labs, including:
- **High growth potential:** iXR technology is still relatively new and has a lot of room for growth. This means that there is a lot of potential for iXR Labs to expand their customer base and increase their revenue, which can be attractive to channel partners looking for new business opportunities.
- **Innovative products:** iXR Labs are known for creating cutting-edge, immersive experiences that can be used for a variety of purposes, from entertainment to training to marketing. Channel partners who work with iXR Labs can offer their customers access to these innovative products, which can set them apart from competitors.
- **Diverse customer base:** iXR Labs serve a diverse customer base, including businesses, schools, government agencies, and consumers. This means that there are many potential customers for channel partners to target, which can help them expand their reach and increase their revenue.
- **High margins:** iXR Labs often offer high margins to their channel partners, meaning that they can make a significant profit on each sale. This can be especially attractive to channel partners who are looking for new sources of revenue or who want to increase their profitability.
- **Training and support:** iXR Labs typically provide training and support to their channel partners, which can help them sell their products more effectively and provide better customer service. This can be especially beneficial for channel partners who are new to the iXR industry or who are unfamiliar with the technology.
- **Overall:** Working with an iXR Labs can be a lucrative opportunity for channel partners who are looking for new business opportunities and want to expand their reach in the market.

**Our previous work:**

We have previously worked with government as well as corporate institutions. The likes of which being,

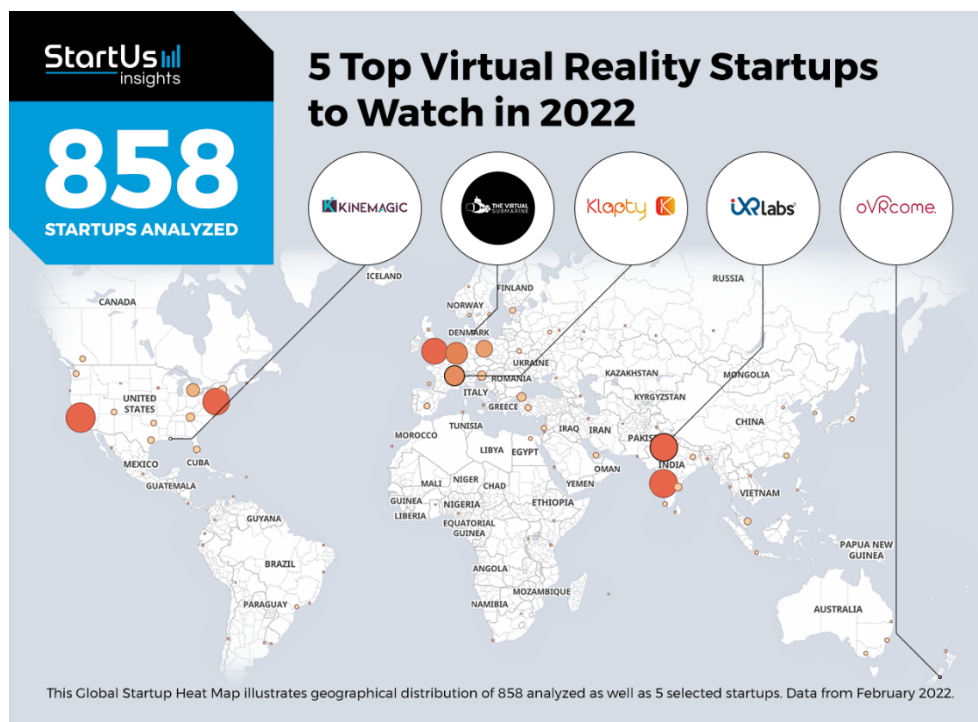
**Govt Bodies:** DRDO, CSIR - IMTECH, AIIMS, Govt. Of Rajasthan, National Institute of Ayurveda

**Corporates:** Hindalco, Ultratech, Adani Power, Tata Projects, Pepsico

**Education:** Pearson, Oxford, Orient Black Swan

We work with a team of professionals from the top institutes across the country, spanning IITs, IIMs, AIIMS, and more.

And we have been recently recognized among ***The Top 5 Virtual Reality (VR) Startups*** to watch out for.



So what are you waiting for?

We have 181 Locations across Pan-India to Choose from and work jointly with one Goal – To make India a more Technologically Sound Engineering Community!!

Best, Rajiv

[rajiv.bordoloi@ixrlabs.com](mailto:rajiv.bordoloi@ixrlabs.com)

Our Group Includes different VR Solutions: [www.ixrlabs.com](http://www.ixrlabs.com) / [www.ediie.com](http://www.ediie.com) / [www.edverse.com](http://www.edverse.com) / [www.coqnihab.com](http://www.coqnihab.com)